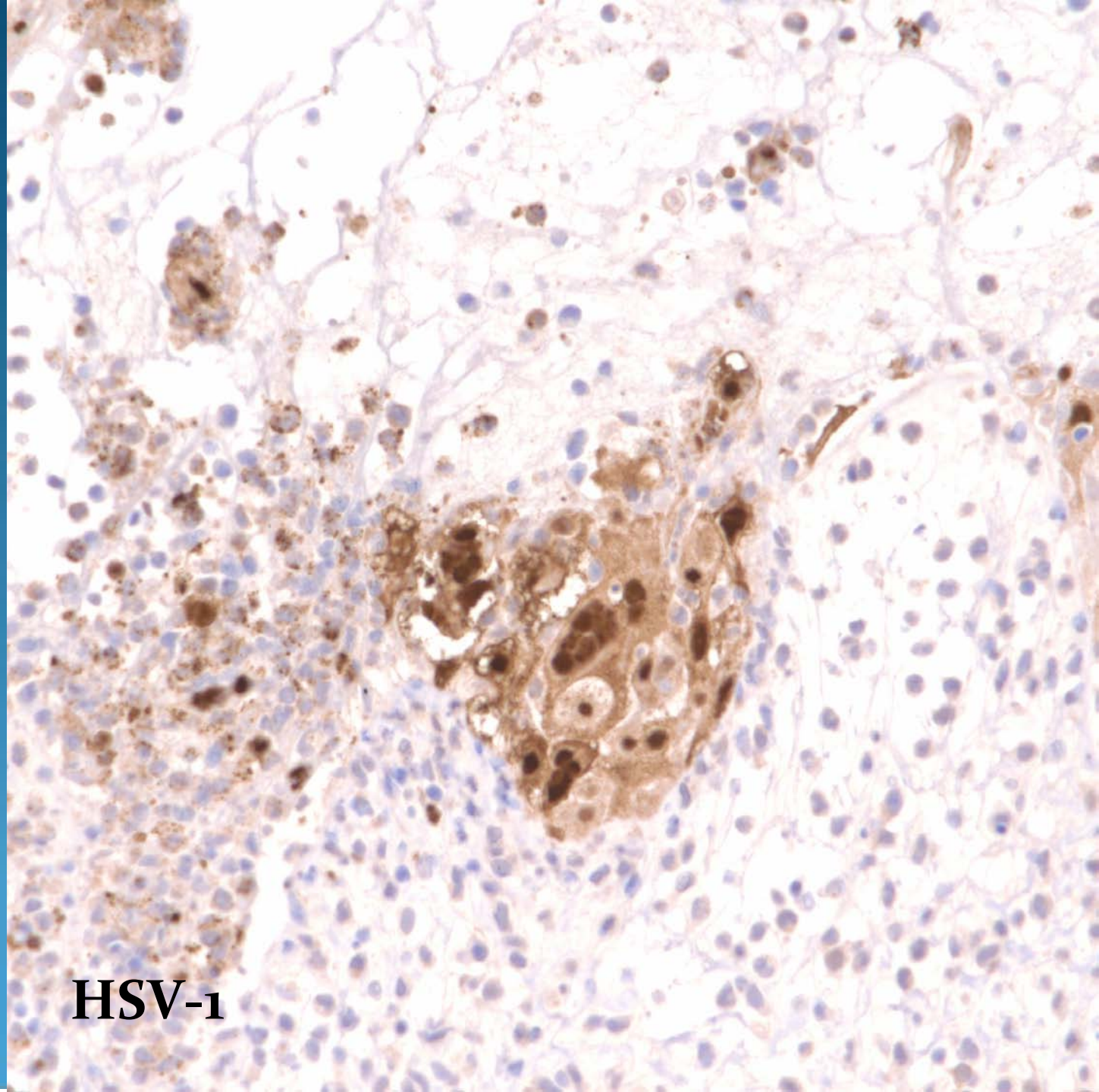
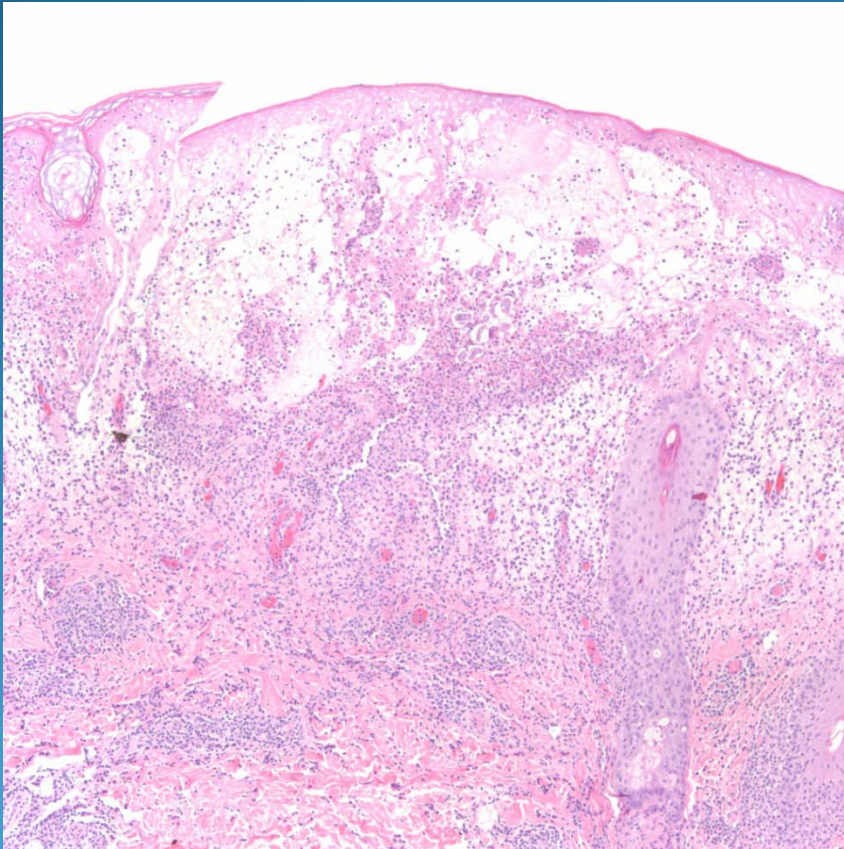


Herpes Simplex Virus Infection



HSV-1

Pearls



- Acute intraepidermal pustule with extensive necrosis
- Look for acantholytic cells, esp. around hair follicles
- Multinucleated giant cells with nuclear chromatin margination or clearing
- May confirm with antibodies to HSV-1 or 2
- If negative, consider Varicella Zoster Virus/Shingles